

**City of Santa Barbara**  
**MATERIAL EXEMPTION REQUEST FOR PESTICIDE APPLICATION**

Dept\_\_ Parks and Recreation \_\_\_\_\_ IPM Coordinator\_\_ Erin Markey \_\_\_\_\_ Phone \_\_ (805) 560-7549\_\_  
Pesticide Applicator (employee or company) Name \_\_\_\_ Enviroscaping \_\_\_\_\_ Phone\_\_ (805) 455-8405\_  
Application Site\_\_ Las Positas Road \_\_\_\_\_ Specific Location\_\_ East side of road, at and north of Portesuello Ave\_\_\_\_  
Date(s) of Application\_\_ May/June 2022 \_\_\_\_\_ Date of Request\_\_ 2/16/2022 \_\_\_\_\_  
Product Name\_\_ Roundup custom \_\_\_\_\_ Active Ingredient \_\_\_\_ glyphosate \_\_\_\_\_  
Number of Applications:       One-time       Other \_\_one-time with possible follow up re-treatment required \_\_  
    • Type:               Emergency     Trial              Programmatic     Other \_\_\_\_\_  
Product type:     Herbicide     Insecticide     Fungicide     Other \_\_\_\_\_  
Application:     Ornamental    Turf               Golf               Vector Control       Park Tree     Street Tree  
                     Right of Way     Vertebrate pest               Other \_\_invasive plant \_\_\_\_\_

Is the pesticide on the *Tiered Materials List*?  No     Yes    If yes, provide the Tier \_\_2/yellow \_\_\_\_\_  
If the pesticide is not on the *Tiered Materials List*, provide the following screening information. See the IPM Strategy and the *Tiered Materials List* for instructions on screening the pesticide.

EPA Reg # \_\_\_\_\_ Signal \_\_\_\_\_ Estimated Tier \_\_\_\_\_  
Restricted  No     Yes/Describe \_\_\_\_\_  
P Waste \_\_\_\_\_ PBT \_\_\_\_\_ WA PBT \_\_\_\_\_ Persistent \_\_\_\_\_ Mobil \_\_\_\_\_  
Cancer \_\_\_\_\_ Repro \_\_\_\_\_ Neuro \_\_\_\_\_ Endocrine \_\_\_\_\_  
Bird \_\_\_\_\_ Fish \_\_\_\_\_ Bees \_\_\_\_\_ Wildlife \_\_\_\_\_

Attach product label and MSDS to this form.

**Describe the pest problem.**

Pampas grass an invasive, exotic plant that causes negative impacts to creek and wetland habitat function, has colonized a small wetland adjacent to Las Positas road. Pampas grass forms very dense, clusters that can prevent the natural recruitment of native vegetation, displace existing native habitat, and reduce food resources for wildlife. It is very fast growing and also easily spreads by seed.

Once established this species is very difficult to remove by hand with very dense root systems, and mechanical removal within this wetland environment is not feasible.

**Describe the management goals and objectives for this site.**

The goal is to eliminate pampas grass from this site. Small individuals will be hand dug out, the large established individuals will be cut and sprayed with herbicide. Any new seedling that come into the site will be hand removed.

**What is the damage threshold for this pest at this site?**

Any living pampas grass plant material will trigger removal action. New seedlings will be hand removed but spot retreatment of larger individuals may be required to ensure complete eradication. Pampas grass has an extremely rapid growth rate and becomes increasingly difficult to remove once established.

**Describe the monitoring of the pest and potential predators that was conducted and the control methods previously used at the site.**

The site has been monitored by the Creeks Division and will continue to be once the project is initiated. No previous control measures were employed.

**Describe how the product would be applied including frequency, concentration, and method of application.**

Large pampas grasses would be cut to 2-4 inches above ground level, and herbicide would be immediately sprayed on the remaining foliage. The area would be rechecked in 3-4 weeks for any regrowth and retreated if necessary.

**City of Santa Barbara**  
**MATERIAL EXEMPTION REQUEST FOR PESTICIDE APPLICATION**

**What non-target impacts are anticipated?**

Because the application is so localized we will minimize pesticide drift to the maximum extent possible. Blue dye will lessen the amount of excess application of herbicide. No non target impacts are anticipated.

**How does the use of this product help achieve the site management goals? Note if this is curative or preventative.**

This is a curative method since the pampas grass is already established at this sites and the management goal is complete removal.

**How will the effectiveness of this product be monitored? Include expected results and indicators of success.**

Short-term success will be measured using visual observations of the site to determine if the target weed species has been eradicated from the site. No re-growth of the target species will be considered a success. Long-term success will be measured by the amount of native plant cover and diversity.

**Describe site conditions, for example consider the following: restricted access, distance from a creek or body of water, degree of runoff, site is a pesticide-free zone, etc.**

The site is adjacent to Las Positas Road in an area with no side walk or access. There is a small wetland area that drains to Arroyo Burro Creek within the site. Roundup custom is approved for use in aquatic environments. . The cut-stump-paint method will reduce the amount of pesticide drift and impacts to adjacent plants and aquatic resources.

**List alternatives considered, alternatives implemented and why they were eliminated.**

*Mechanical removal* was considered but deemed to impactful (damage to surrounding vegetation, erosion etc) and costly.

*Hand removal* will be utilized for small seedlings and individuals

*Spraying herbicide*: the potential for herbicide drift and impacts to adjacent vegetation is too great in these confined locations.

*Biocontrol*: no control agents are available at this time.

**Justification: describe why is applying this pesticide is the best solution and why a less-hazardous chemical, non-chemical option or taking no action is not feasible.**

Taking no action was deemed infeasible as the pampas grass has continued to spread and show more established clumps in the last few years. Waiting would only require additional herbicide use in the future to remove. Less hazardous chemicals have not been deemed effective on this pest and as stated above mechanical removal of the larger plants would be impactful to the wetland environment, require traffic control on Las Positas and be very costly.

**Was outside expertise utilized?  No  Yes / Describe**

Deputy Agricultural Commissioner and chair of the Santa Barbara County Weed Management Area – Stephanie Stark,

**Describe future plans to prevent using the chemical again.**

Quarterly monitoring will occur in 2022-2023 to look for new seedlings and re-sprouts, which will be hand dug up to prevent re-establishment. Followed by annual monitoring.

**City of Santa Barbara**  
**MATERIAL EXEMPTION REQUEST FOR PESTICIDE APPLICATION**

**Signatures** \_\_\_\_\_

Department IPM Coordinator

City IPM Coordinator

**Completed by the City of Santa Barbara Staff IPM Committee**

Vote Tally \_\_\_\_\_ Disposition:  Approved  Denied/Reason \_\_\_\_\_

If approved, follow the attached best management practices.

Comments:

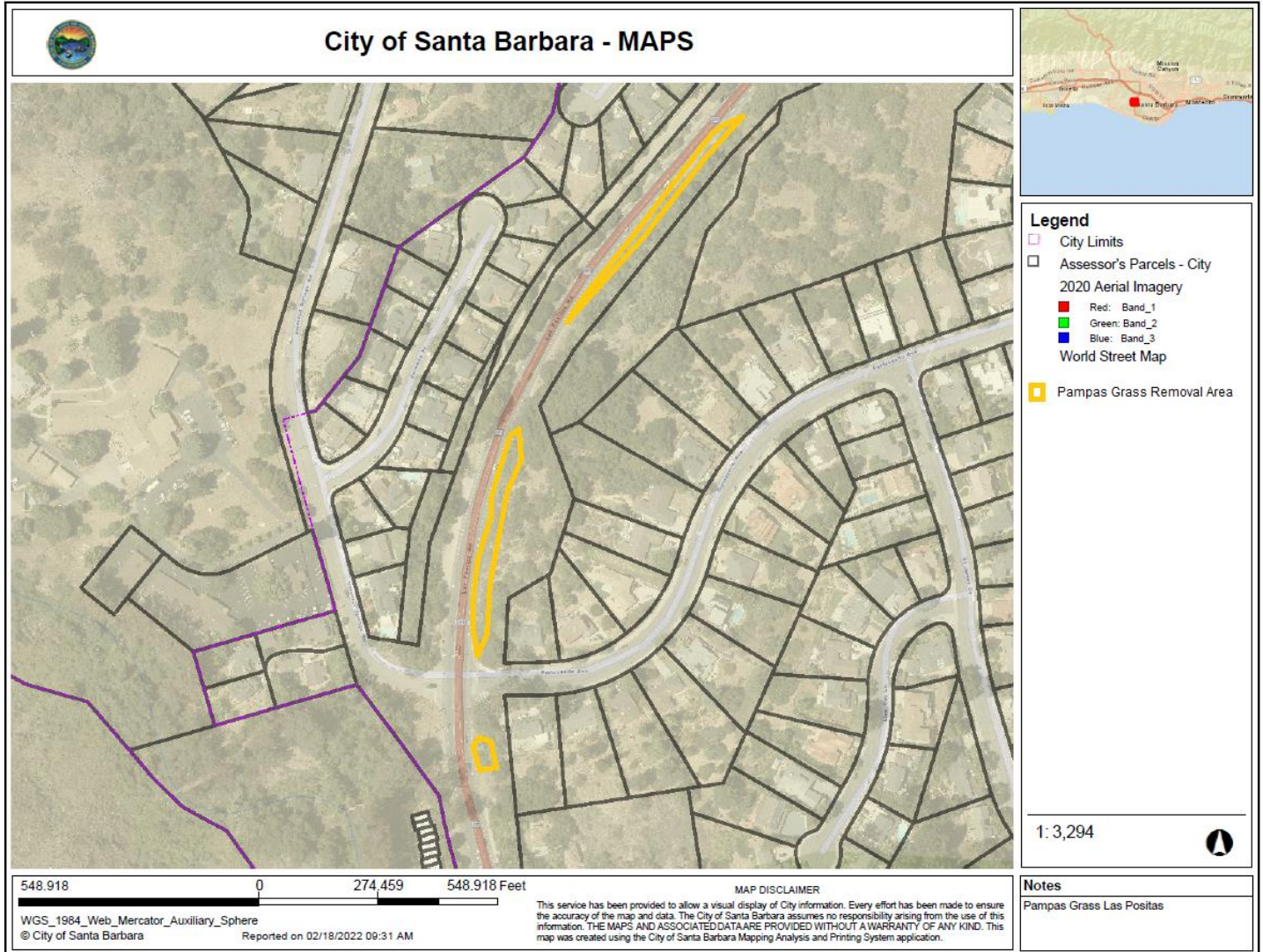
**Completed by the IPM Advisory Committee**

Vote Tally \_\_\_\_\_ Disposition:  Approved  Denied/Reason \_\_\_\_\_

If approved, follow the attached best management practices.

Comments:

**City of Santa Barbara  
MATERIAL EXEMPTION REQUEST FOR PESTICIDE APPLICATION**



# SAFETY DATA SHEET



## ROUNDUP CUSTOM® FOR AQUATIC & TERRESTRIAL USE

Version 1.0 / USA  
102000037603

1/11  
Revision Date: 09/25/2020  
Print Date: 10/02/2020

### SECTION 1: IDENTIFICATION OF THE SUBSTANCE/MIXTURE AND OF THE COMPANY/UNDERTAKING

#### Product identifier

Trade name	ROUNDUP CUSTOM® FOR AQUATIC & TERRESTRIAL USE
Product code (UVP)	86738473
SDS Number	102000037603
EPA Registration No.	524-343

#### Relevant identified uses of the substance or mixture and uses advised against

Use	Herbicide
Restrictions on use	See product label for restrictions.

#### Information on supplier

Supplier	Bayer Environmental Science A division of Bayer CropScience LP 5000 Centregreen Way, Suite 400 Cary, NC 27513 USA
Responsible Department	Email: SDSINFO.BCS-NA@bayer.com
Emergency telephone no.	
Emergency Telephone Number (24hr/ 7 days)	1-800-334-7577
Product Information Telephone Number	1-800-331-2867

### SECTION 2: HAZARDS IDENTIFICATION

#### Classification in accordance with regulation HCS 29CFR §1910.1200

This material is not hazardous under the criteria of the Federal OSHA Hazard Communication Standard 29CFR 1910.1200.

#### Hazards Not Otherwise Classified (HNOC)

No physical hazards not otherwise classified.  
No health hazards not otherwise classified.

### SECTION 3: COMPOSITION/INFORMATION ON INGREDIENTS

# SAFETY DATA SHEET



## ROUNDUP CUSTOM® FOR AQUATIC & TERRESTRIAL USE

Version 1.0 / USA  
102000037603

2/11  
Revision Date: 09/25/2020  
Print Date: 10/02/2020

---

Hazardous Component Name	CAS-No.	Concentration % by weight
Isopropylamine salt of glyphosate	38641-94-0	53.8

---

### SECTION 4: FIRST AID MEASURES

#### Description of first aid measures

<b>General advice</b>	When possible, have the product container or label with you when calling a poison control center or doctor or going for treatment.
<b>Inhalation</b>	Move to fresh air. If person is not breathing, call 911 or an ambulance, then give artificial respiration, preferably mouth-to-mouth if possible. Call a physician or poison control center immediately.
<b>Skin contact</b>	Wash off immediately with plenty of water for at least 15 minutes. Take off contaminated clothing and shoes immediately. Call a physician or poison control center immediately.
<b>Eye contact</b>	Hold eye open and rinse slowly and gently with water for 15-20 minutes. Remove contact lenses, if present, after the first 5 minutes, then continue rinsing eye. Call a physician or poison control center immediately.
<b>Ingestion</b>	Call a physician or poison control center immediately. Rinse out mouth and give water in small sips to drink. DO NOT induce vomiting unless directed to do so by a physician or poison control center. Never give anything by mouth to an unconscious person. Do not leave victim unattended.

#### Most important symptoms and effects, both acute and delayed

<b>Symptoms</b>	To date no symptoms are known.
<b>Indication of any immediate medical attention and special treatment needed</b>	
<b>Risks</b>	This product is not a cholinesterase inhibitor.
<b>Treatment</b>	Treatment with atropine and oximes is not indicated. Appropriate supportive and symptomatic treatment as indicated by the patient's condition is recommended.

---

### SECTION 5: FIREFIGHTING MEASURES

#### Extinguishing media

<b>Suitable</b>	Use water spray, alcohol-resistant foam, dry chemical or carbon dioxide.
<b>Unsuitable</b>	High volume water jet

# SAFETY DATA SHEET



## ROUNDUP CUSTOM® FOR AQUATIC & TERRESTRIAL USE

Version 1.0 / USA  
102000037603

3/11  
Revision Date: 09/25/2020  
Print Date: 10/02/2020

---

<b>Special hazards arising from the substance or mixture</b>	In the event of fire the following may be released: Carbon monoxide (CO), Carbon dioxide (CO <sub>2</sub> ), Nitrogen oxides (NO <sub>x</sub> ), Oxides of phosphorus
<b>Advice for firefighters</b>	
<b>Special protective equipment for firefighters</b>	In the event of fire and/or explosion do not breathe fumes. Firefighters should wear NIOSH approved self-contained breathing apparatus and full protective clothing. Equipment should be thoroughly decontaminated after use.
<b>Further information</b>	Keep out of smoke. Fight fire from upwind position. Cool closed containers exposed to fire with water spray. Do not allow run-off from fire fighting to enter drains or water courses.
<b>Flash point</b>	does not flash
<b>Auto-ignition temperature</b>	No data available
<b>Lower explosion limit</b>	Not applicable
<b>Upper explosion limit</b>	Not applicable
<b>Explosivity</b>	Not explosive

---

### SECTION 6: ACCIDENTAL RELEASE MEASURES

#### Personal precautions, protective equipment and emergency procedures

**Precautions** Use personal protective equipment. Keep unauthorized people away. Avoid contact with spilled product or contaminated surfaces.

#### Methods and materials for containment and cleaning up

**Methods for cleaning up** Soak up with inert absorbent material (e.g. sand, silica gel, acid binder, universal binder, sawdust). Collect and transfer the product into a properly labelled and tightly closed container. Keep in suitable, closed containers for disposal. Clean contaminated floors and objects thoroughly, observing environmental regulations.

**Additional advice** Use personal protective equipment. If the product is accidentally spilled, do not allow to enter soil, waterways or waste water canal. Do not allow product to contact non-target plants.

**Reference to other sections** Information regarding safe handling, see section 7.  
Information regarding personal protective equipment, see section 8.  
Information regarding waste disposal, see section 13.

---

### SECTION 7: HANDLING AND STORAGE

#### Precautions for safe handling

# SAFETY DATA SHEET



## ROUNDUP CUSTOM® FOR AQUATIC & TERRESTRIAL USE

Version 1.0 / USA  
102000037603

4/11  
Revision Date: 09/25/2020  
Print Date: 10/02/2020

---

<b>Advice on safe handling</b>	Avoid contact with skin, eyes and clothing. Ensure adequate ventilation.
<b>Hygiene measures</b>	Wash hands thoroughly with soap and water after handling and before eating, drinking, chewing gum, using tobacco, using the toilet or applying cosmetics. Remove Personal Protective Equipment (PPE) immediately after handling this product. Remove soiled clothing immediately and clean thoroughly before using again. Wash thoroughly and put on clean clothing. Keep working clothes separately. Garments that cannot be cleaned must be destroyed (burnt).
<b>Conditions for safe storage, including any incompatibilities</b>	
<b>Requirements for storage areas and containers</b>	Store in original container. Store in a cool, dry place and in such a manner as to prevent cross contamination with other crop protection products, fertilizers, food, and feed. Store in a place accessible by authorized persons only. Reacts with galvanised steel or unlined mild steel to produce hydrogen, a highly flammable gas that could explode. Protect from freezing. Partial crystallization may occur on prolonged storage below the minimum storage temperature. Freezing will affect the physical condition but will not damage the material. Thaw and mix before using.
<b>Advice on common storage</b>	Keep away from food, drink and animal feedingstuffs.

---

## SECTION 8: EXPOSURE CONTROLS/PERSONAL PROTECTION

### Control parameters

No known occupational limit values.

### Exposure controls

#### Personal protective equipment

In normal use and handling conditions please refer to the label and/or leaflet. In all other cases the following recommendations would apply.

#### Respiratory protection

When respirators are required, select NIOSH approved equipment based on actual or potential airborne concentrations and in accordance with the appropriate regulatory standards and/or industry recommendations.

#### Hand protection

Please observe the instructions regarding permeability and breakthrough time which are provided by the supplier of the gloves. Also take into consideration the specific local conditions under which the product is used, such as the danger of cuts, abrasion, and the contact time.  
Chemical-resistant gloves (barrier laminate, butyl rubber, nitrile rubber or Viton)  
Wash gloves when contaminated. Dispose of when contaminated inside, when perforated or when contamination on the outside cannot be removed. Wash hands frequently and always before eating,



# SAFETY DATA SHEET



## ROUNDUP CUSTOM® FOR AQUATIC & TERRESTRIAL USE

Version 1.0 / USA  
102000037603

5/11  
Revision Date: 09/25/2020  
Print Date: 10/02/2020

---

	drinking, smoking or using the toilet.
<b>Eye protection</b>	Use tightly sealed goggles and face protection.
<b>Skin and body protection</b>	Wear long-sleeved shirt and long pants and shoes plus socks.
<b>General protective measures</b>	Follow manufacturer's instructions for cleaning/maintaining PPE. If no such instructions for washables, use detergent and warm/tepid water. Keep and wash PPE separately from other laundry.

---

### SECTION 9. PHYSICAL AND CHEMICAL PROPERTIES

#### Information on basic physical and chemical properties

<b>Form</b>	Liquid, clear
<b>Colour</b>	colorless to light yellow or brown
<b>Odour</b>	odourless
<b>Odour Threshold</b>	No data available
<b>pH</b>	4.4 - 4.8 (6.3 %)
<b>Melting point/range</b>	No data available
<b>Boiling Point</b>	No data available
<b>Flash point</b>	does not flash
<b>Flammability</b>	No data available
<b>Auto-ignition temperature</b>	No data available
<b>Minimum ignition energy</b>	Not applicable
<b>Self-accelerating decomposition temperature (SADT)</b>	No data available
<b>Upper explosion limit</b>	Not applicable
<b>Lower explosion limit</b>	Not applicable
<b>Vapour pressure</b>	Not applicable
<b>Evaporation rate</b>	No data available
<b>Relative vapour density</b>	No significant volatility.
<b>Relative density</b>	1.206 (20 °C)
<b>Density</b>	1.21 g/cm <sup>3</sup> (20 °C)
<b>Water solubility</b>	completely soluble
<b>Partition coefficient: n-</b>	Glyphosate: log Pow: -3.2

# SAFETY DATA SHEET



## ROUNDUP CUSTOM® FOR AQUATIC & TERRESTRIAL USE

Version 1.0 / USA  
102000037603

6/11  
Revision Date: 09/25/2020  
Print Date: 10/02/2020

### octanol/water

<b>Viscosity, dynamic</b>	No data available
<b>Viscosity, kinematic</b>	No data available
<b>Oxidizing properties</b>	No data available
<b>Explosivity</b>	Not explosive
<b>Other information</b>	Further safety related physical-chemical data are not known.

---

## SECTION 10: STABILITY AND REACTIVITY

### Reactivity

<b>Thermal decomposition</b>	Stable under normal conditions.
<b>Chemical stability</b>	Stable under recommended storage conditions.
<b>Possibility of hazardous reactions</b>	Reacts with galvanised steel or unlined mild steel to produce hydrogen, a highly flammable gas that could explode.
<b>Conditions to avoid</b>	Extremes of temperature and direct sunlight.
<b>Incompatible materials</b>	Galvanised steel, Unlined mild steel
<b>Hazardous decomposition products</b>	No decomposition products expected under normal conditions of use.

---

## SECTION 11: TOXICOLOGICAL INFORMATION

<b>Exposure routes</b>	Skin contact, Eye contact, Inhalation
<b>Immediate Effects</b>	
<b>Eye</b>	Not expected to produce significant adverse effects when recommended use instructions are followed.
<b>Skin</b>	Not expected to produce significant adverse effects when recommended use instructions are followed.
<b>Ingestion</b>	Not expected to produce significant adverse effects when recommended use instructions are followed.
<b>Inhalation</b>	Not expected to produce significant adverse effects when recommended use instructions are followed.
<b>Information on toxicological effects</b>	
<b>Acute oral toxicity</b>	LD50 (Rat) > 5,000 mg/kg Test conducted with a similar formulation. No deaths

# SAFETY DATA SHEET



## ROUNDUP CUSTOM® FOR AQUATIC & TERRESTRIAL USE

Version 1.0 / USA  
102000037603

7/11  
Revision Date: 09/25/2020  
Print Date: 10/02/2020

<b>Acute inhalation toxicity</b>	LC50 (Rat) > 4.24 mg/l Exposure time: 4 h Determined in the form of liquid aerosol. Highest attainable concentration. No deaths Test conducted with a similar formulation.
<b>Acute dermal toxicity</b>	LD50 (Rabbit) > 5,000 mg/kg Test conducted with a similar formulation. No deaths
<b>Skin corrosion/irritation</b>	No skin irritation (Rabbit) Test conducted with a similar formulation.
<b>Serious eye damage/eye irritation</b>	No eye irritation (Rabbit) Test conducted with a similar formulation.
<b>Respiratory or skin sensitisation</b>	Skin: Non-sensitizing. (Guinea pig) OECD Test Guideline 406, Buehler test Test conducted with a similar formulation.

### Assessment STOT Specific target organ toxicity – single exposure

Glyphosate: Based on available data, the classification criteria are not met.

### Assessment STOT Specific target organ toxicity – repeated exposure

Glyphosate did not cause specific target organ toxicity in experimental animal studies.

### Assessment mutagenicity

Glyphosate was not mutagenic or genotoxic in a battery of in vitro and in vivo tests.

### Assessment carcinogenicity

Glyphosate was not carcinogenic in lifetime feeding studies in rats and mice.  
Important comment to IARC Listing: Our expert opinion is that classification as a carcinogen is not warranted.

### ACGIH

None.

### NTP

None.

### IARC

Isopropylamine salt of glyphosate                      38641-94-0                      Overall evaluation: 2A

### OSHA

None.

### Assessment toxicity to reproduction

Glyphosate did not cause reproductive toxicity in a two-generation study in rats.

### Assessment developmental toxicity

# SAFETY DATA SHEET



## ROUNDUP CUSTOM® FOR AQUATIC & TERRESTRIAL USE

Version 1.0 / USA  
102000037603

8/11  
Revision Date: 09/25/2020  
Print Date: 10/02/2020

Glyphosate did not cause developmental toxicity in rats and rabbits.

### Aspiration hazard

Based on available data, the classification criteria are not met.

## SECTION 12: ECOLOGICAL INFORMATION

<b>Toxicity to fish</b>	LC50 (Oncorhynchus mykiss (rainbow trout)) > 1,000 mg/l static test; Exposure time: 96 h Test conducted with a similar formulation.  LC50 (Lepomis macrochirus (Bluegill sunfish)) > 1,000 mg/l static test; Exposure time: 96 h Test conducted with a similar formulation.
<b>Chronic toxicity to fish</b>	Oncorhynchus mykiss (rainbow trout) flow-through test NOEC: $\geq$ 9.63 mg/l The value mentioned relates to the active ingredient glyphosate.
<b>Toxicity to aquatic invertebrates</b>	EC50 (Daphnia magna (Water flea)) 930 mg/l static test; Exposure time: 48 h Test conducted with a similar formulation.
<b>Chronic toxicity to aquatic invertebrates</b>	EC50 (Daphnia magna (Water flea)): 12.5 mg/l Exposure time: 21 d The value mentioned relates to the active ingredient glyphosate.
<b>Toxicity to aquatic plants</b>	EbC50 (Raphidocelis subcapitata (freshwater green alga)) 72.9 mg/l static test; Exposure time: 72 h The value mentioned relates to the active ingredient glyphosate.  NOEC (Raphidocelis subcapitata (freshwater green alga)) 26.4 mg/l static test; Exposure time: 72 h The value mentioned relates to the active ingredient glyphosate.
<b>Biodegradability</b>	Glyphosate: Not rapidly biodegradable
<b>Koc</b>	Glyphosate: Koc: 6920
<b>Bioaccumulation</b>	Glyphosate: Does not bioaccumulate.
<b>Mobility in soil</b>	Glyphosate: Immobile in soil
<b>Results of PBT and vPvB assessment</b>	
<b>PBT and vPvB assessment</b>	Glyphosate: This substance is not considered to be persistent, bioaccumulative and toxic (PBT). This substance is not considered to be very persistent and very bioaccumulative (vPvB).
<b>Additional ecological</b>	No further ecological information is available.

# SAFETY DATA SHEET



## ROUNDUP CUSTOM® FOR AQUATIC & TERRESTRIAL USE

Version 1.0 / USA  
102000037603

9/11  
Revision Date: 09/25/2020  
Print Date: 10/02/2020

---

### information

**Environmental precautions** Apply this product as specified on the label.  
Do not apply directly to water, to areas where surface water is present or to intertidal areas below the mean high water mark.  
Do not contaminate surface or ground water by cleaning equipment or disposal of wastes, including equipment wash water.  
Retain and dispose of contaminated wash water.

---

### SECTION 13: DISPOSAL CONSIDERATIONS

#### Waste treatment methods

**Product** It is best to use all of the product in accordance with label directions. If it is necessary to dispose of unused product, please follow container label instructions and applicable local guidelines.  
Do not contaminate water, food, or feed by disposal.  
Follow all local/regional/national/international regulations.

**Contaminated packaging** Follow advice on product label and/or leaflet.  
Do not re-use empty containers.  
Triple rinse containers.  
Puncture container to avoid re-use.  
Completely empty container into application equipment, then dispose of empty container in a sanitary landfill, by incineration or by other procedures approved by state/provincial and local authorities.  
If burned, stay out of smoke.

**RCRA Information** Characterization and proper disposal of this material as a special or hazardous waste is dependent upon Federal, State and local laws and are the user's responsibility. RCRA classification may apply.

---

### SECTION 14: TRANSPORT INFORMATION

According to national and international transport regulations this material is not classified as dangerous goods / hazardous material.

---

### SECTION 15: REGULATORY INFORMATION

**EPA Registration No.** 524-343  
**US Federal Regulations**

**TSCA list**

Water

7732-18-5

# SAFETY DATA SHEET



## ROUNDUP CUSTOM® FOR AQUATIC & TERRESTRIAL USE

Version 1.0 / USA  
102000037603

10/11  
Revision Date: 09/25/2020  
Print Date: 10/02/2020

---

### US. Toxic Substances Control Act (TSCA) Section 12(b) Export Notification (40 CFR 707, Subpt D)

No export notification needs to be made.

### SARA Title III - Section 302 - Notification and Information

Not applicable.

### SARA Title III - Section 313 - Toxic Chemical Release Reporting

None.

### US States Regulatory Reporting

#### CA Prop65

This product does not contain any substances known to the State of California to cause cancer.

This product does not contain any substances known to the State of California to cause reproductive harm.

### US State Right-To-Know Ingredients

None.

### Environmental

#### CERCLA

None.

#### Clean Water Section 307(a)(1)

None.

#### Safe Drinking Water Act Maximum Contaminant Levels

None.

### EPA/FIFRA Information:

This chemical is a pesticide product registered by the Environmental Protection Agency and is subject to certain labeling requirements under federal pesticide law. These requirements differ from the classification criteria and hazard information required for safety data sheets, and for workplace labels of non-pesticide chemicals. Following is the hazard information required on the pesticide label:

**Signal word:** Caution!

---

## SECTION 16: OTHER INFORMATION

### Abbreviations and acronyms

49CFR	Code of Federal Regulations, Title 49
ACGIH	US. ACGIH Threshold Limit Values
ATE	Acute toxicity estimate
CAS-Nr.	Chemical Abstracts Service number
CERCLA	Comprehensive Environmental Response, Compensation, and Liability Act
EINECS	European inventory of existing commercial substances
ELINCS	European list of notified chemical substances
IARC	International Agency for Research on Cancer
IATA	International Air Transport Association
IMDG	International Maritime Dangerous Goods

# SAFETY DATA SHEET



## ROUNDUP CUSTOM® FOR AQUATIC & TERRESTRIAL USE

Version 1.0 / USA  
102000037603

11/11  
Revision Date: 09/25/2020  
Print Date: 10/02/2020

---

N.O.S.	Not otherwise specified
NTP	US. National Toxicology Program (NTP) Report on Carcinogens
OECD	Organization for Economic Co-operation and Development
TDG	Transportation of Dangerous Goods
TWA	Time weighted average
UN	United Nations
WHO	World health organisation

### **NFPA 704 (National Fire Protection Association):**

Health - 0      Flammability - 1      Instability - 1      Others - none

### **HMIS (Hazardous Materials Identification System, based on the Third Edition Ratings Guide)**

Health - 0      Flammability - 1      Physical Hazard - 1      PPE -

0 = minimal hazard, 1 = slight hazard, 2 = moderate hazard, 3 = severe hazard, 4 = extreme hazard

**Reason for Revision:** New Safety Data Sheet.

**Revision Date:** 09/25/2020

This information is provided in good faith but without express or implied warranty. The customer assumes all responsibility for safety and use not in accordance with label instructions. The product names are registered trademarks of Bayer.